

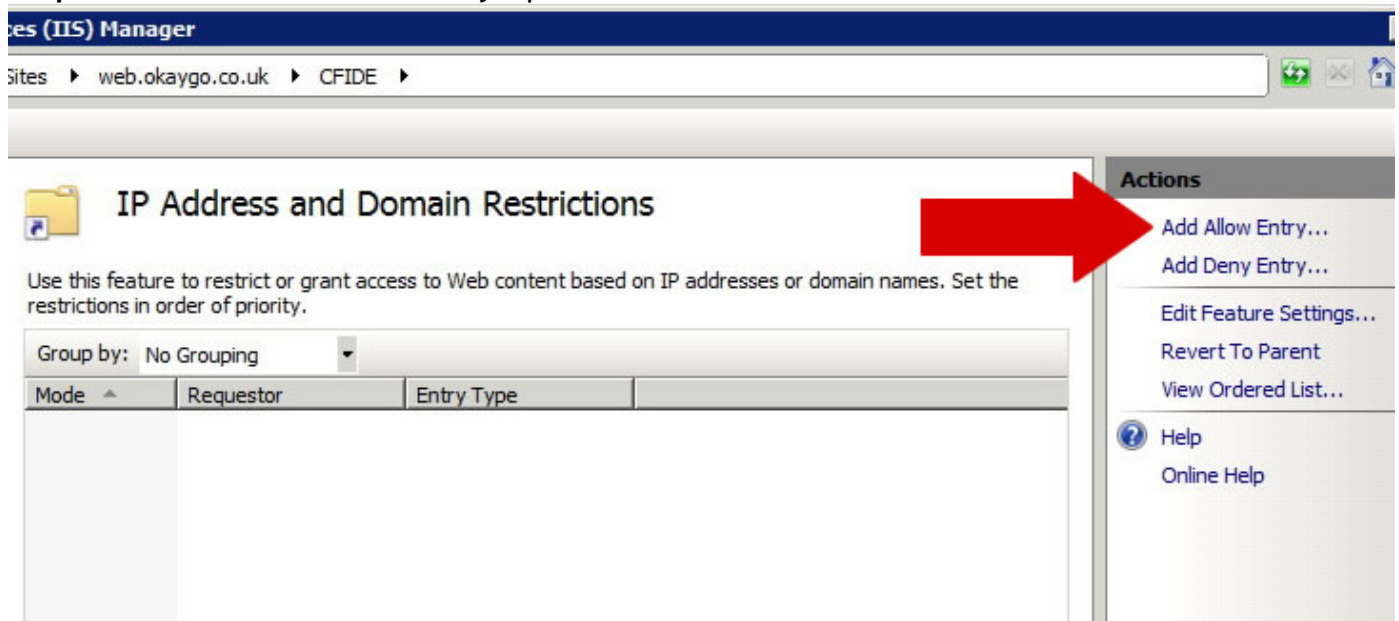
IIS 7: Allow One IP Address, Block All Others

Posted At : October 18, 2012 6:05 AM | Posted By : Stefan Richter
Related Categories: Windows

Today I found myself having to configure IIS under Windows Server 2008 and I needed to restrict access to a specific directory by IP address. It was quite tricky to figure out how to do this due to Microsoft's idiotic way of presenting what could easily be a straight forward user interface operation...

What follows are the steps involved to block all IPs in IIS, and granting access to one specific IP. As far as I can tell this will work both on a site and a directory level (in my case it was a virtual directory that needed restricting).

Step 1: Click the 'Add Allow entry' option

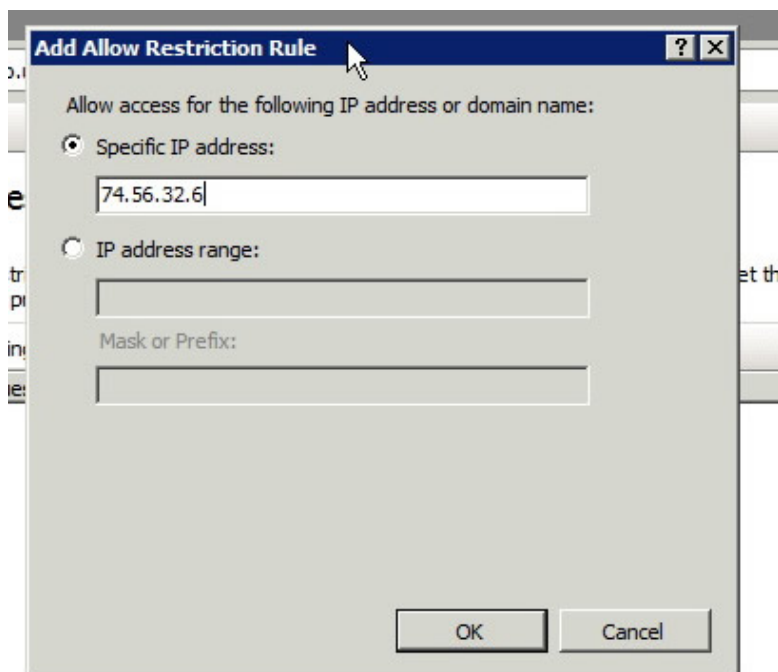


The screenshot shows the IIS Manager interface for the site 'web.okaygo.co.uk' under the directory 'CFIDE'. The main area is titled 'IP Address and Domain Restrictions' and contains a description: 'Use this feature to restrict or grant access to Web content based on IP addresses or domain names. Set the restrictions in order of priority.' Below this is a 'Group by:' dropdown set to 'No Grouping' and a table with columns 'Mode', 'Requestor', and 'Entry Type'. The table is currently empty. On the right side, there is an 'Actions' menu with several options. A large red arrow points to the 'Add Allow Entry...' option.

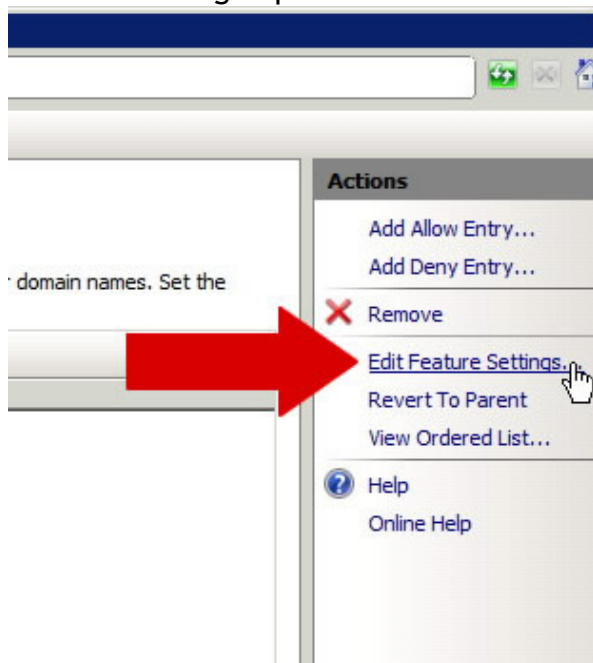
Mode	Requestor	Entry Type
------	-----------	------------

- Add Allow Entry...
- Add Deny Entry...
- Edit Feature Settings...
- Revert To Parent
- View Ordered List...
- Help
- Online Help

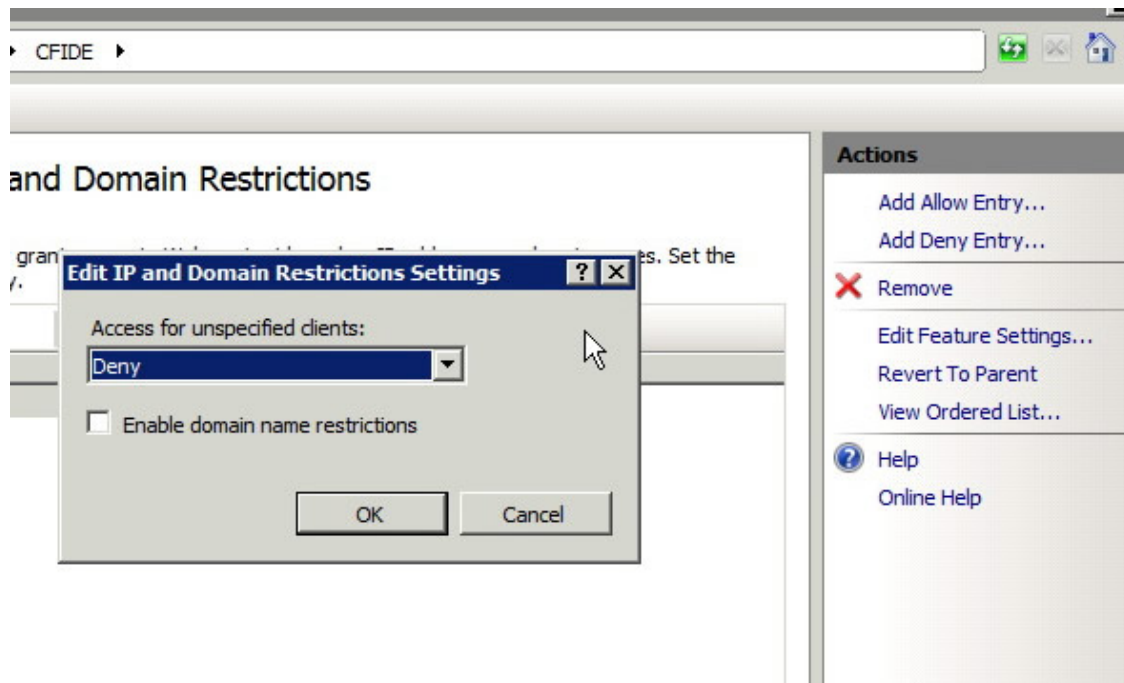
Step 2: Add the IP address you wish to allow access



Step 3: Select the IP entry in the list (there's only one in this case) and then click the 'Edit Feature Settings' option



Step 4: Select 'Deny' in the dropdown menu - this blocks all IPs that are not listed



Hope this helps someone.